

# EL VIVER

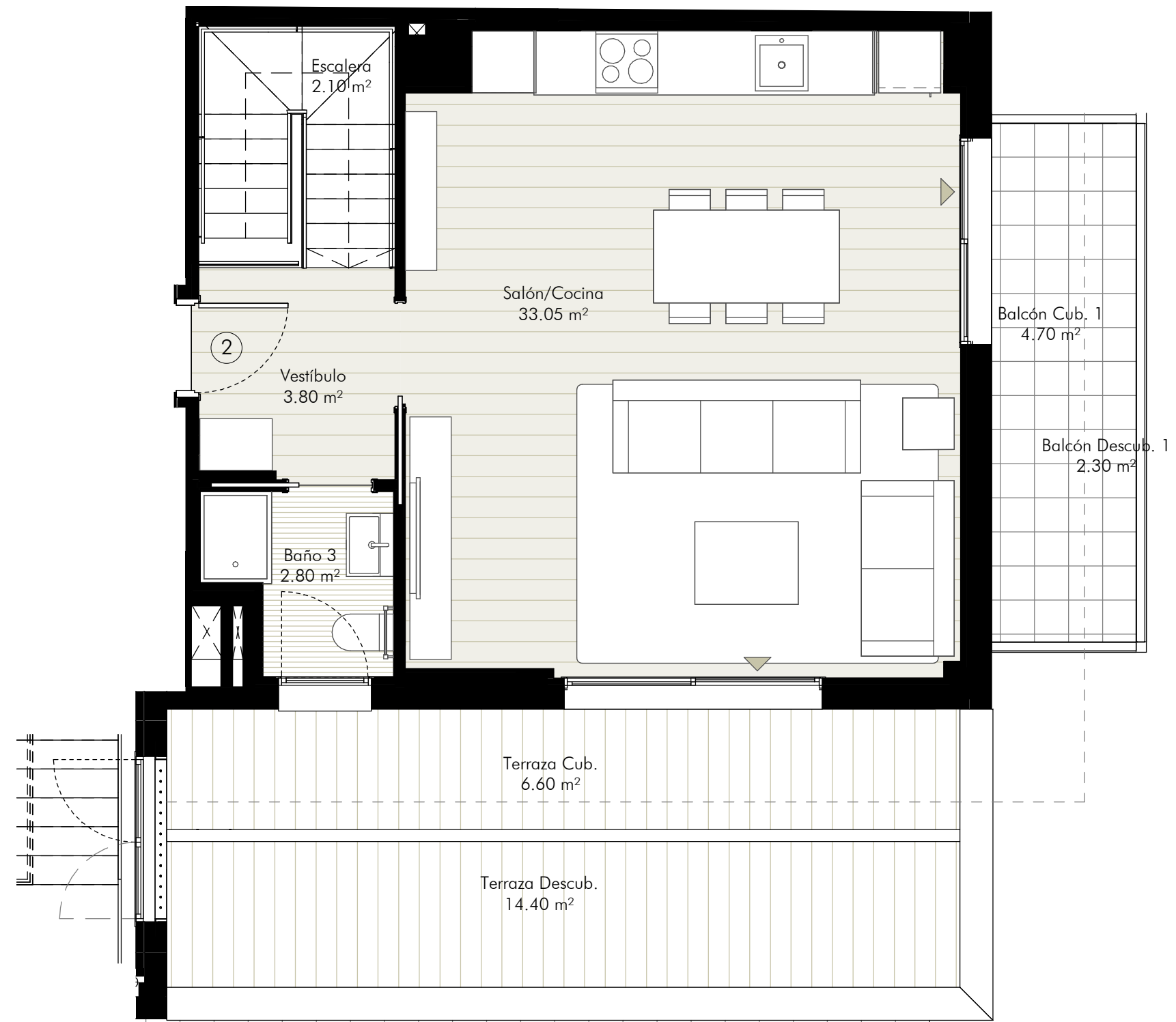
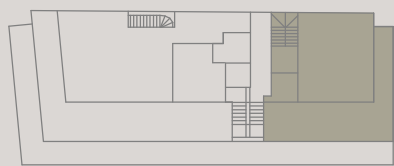
## BADALONA CENTRE



### VIVIENDA PUERTA 2 PLANTA ÁTICO

#### SUPERFICIES

Sup. útil interior	106.55 m <sup>2</sup>
Sup. útil exterior	54.60 m <sup>2</sup>
<b>Sup. útil total</b>	<b>161.15 m<sup>2</sup></b>
Sup. construida interior	131.09 m <sup>2</sup>
Sup. construida exterior	67.48 m <sup>2</sup>
<b>Sup. construida total</b>	<b>198.57 m<sup>2</sup></b>



# EL VIVER

## BADALONA CENTRE



### VIVIENDA PUERTA 2 PLANTA ÁTICO

#### SUPERFICIES

Sup. útil interior 106.55 m<sup>2</sup>

Sup. útil exterior 54.60 m<sup>2</sup>

**Sup. útil total 161.15 m<sup>2</sup>**

Sup. construida interior 131.09 m<sup>2</sup>

Sup. construida exterior 67.48 m<sup>2</sup>

**Sup. construida total 198.57 m<sup>2</sup>**

